

CERTIFICATE OF ANALYSIS

www.primaryjane.com



Product: Full Spectrum Whole Plant Tincture
Description: Hemp Derived CBD Rich Whole Plant Tincture in All Natural MCT
Unit Size: 30 mL
Serving Size: 1 mL
Product Code: W20MA-B

Harvest Source: Vermont, USA
Cultivar: Frosted Lime
Batch ID: W01SH0519FL1-20B01MA
DOM: 29-Jan-20

Quality	Method	Specification	Result
Total CBD:	C5210-HPLCUV (Internal)	600 - 680 MH	637 PASS
Total THC:	C5210-HPLCUV (Internal)	< 0.3 %	0.07 PASS
Appearance:	ASTM E1627 - 11	Light amber viscous liquid	PASS
Odor:	ASTM E1627 - 11	Floral, earthy	PASS
Total Terpenes:	C6198 LCMSMS (Internal)	> 500 ppm	2581 PASS
Minor Cannabinoids:	C5933-GCMS (Internal)	> 25 MG	160 PASS
Safety	Method	Specification	Result
Water Activity	D8196-18	< 0.600 Aw	0.478
Solvents:	C5923-GCMS (Internal)	USP 467	PASS
Pesticides:	C5838 LCMSMS/AOAC 2007.01	OAR333-007-0400/EPA	PASS
Mycotoxins:	C5838 LCMSMS/AOAC 2007.01	MDH Exhibit 6	PASS
Heavy Metals:	ICPMS (External Partner)	MDH Exhibit 4	PASS

Product of Vermont USA



Test Method: C5210 HPLC-UV (Internal)

Test Method: C5210 HPLC-UV (Internal)

Terpene Profile	Parts Per Million	Parts Per Million	Cannabinoid Potency	MG Per Unit	MG Per Serving	
a-Pinene	10.0	Isoborneol	<2	CBD	637	21.2
Camphene	6.6	Menthol	<2	CBDA	<14	<0.47
Sabinene-	<2	endo-Borneol	<2	d9-THC	19.6	0.65
b-Pinene	<2	a-Terpeneol	14.3	THCA-A	<14	<0.47
b-Myrcene	6.7	g Terpeneol	93.6	d8-THC	<1.4	<0.05
a-Phellandrene	39.4	Nerol	<2	CBG	28.1	0.94
Carene	<2	Pulegone	4.9	CBGA	<1.4	<0.05
a-Terpinene	<2	Geraniol	<2	CBN	1.82	0.06
D-Limonene	5.7	Geranyl acetate	4.7	CBNA	1.85	0.06
o-Cymene	12.1	a-Cedrene	<2	CBC	111.8	3.73
Eucalyptol	3.7	(E)-b-Famesene	<2	CBCA	6.17	0.21
b-Ocimene	16.7	Caryophyllene	<2	CBDV	10.27	0.34
gTerpinene	4.9	a-Humulene	1967.8	CBDVA	<1.4	<0.05
Terpinolene	2.1	trans-Neradiol	<2	THCV	<1.4	<0.05
Sabinene Hydrate	< 2	cis-Neradiol	<2	THCVA	<1.4	<0.05
Fenchone	32.3	Valencene	29.3	CBL	<1.4	<0.05
Linalool	<2	Guaiol	<2			
Fenchol	2.8	Caryophyllene Oxide	75.7			
Isopulegol	<2	Cedrol	241.0			
Camphor	6.9	a-Bisabolol	<2			

Recommended Storage: 20-25 ° C (68-77° F), Refrigerate for long term storage (> 3 months); avoid exposure to prolonged heat and light.

Retest Date: 1-Jan-22

Product Information: Whole plant oil based tinctures are intended for oral ingestion only with a recommended serving size of 0.5 - 1.0 mL twice a day.

Approved By:

Representative: Keith Griswold, MS

Title: Chief Scientific Officer

Date: 20-Feb-20



Data reported in this document pertains only to this batch and as sampled according to QMT.PLN.01.03. All rights are reserved to the producer and distributor of this product. Unauthorized reproduction of this data is prohibited. All testing is performed with internally developed test methods that have been verified or validated in accordance to AOAC and ICH guidelines. Test method performance is monitored through control charting.

CERTIFICATE OF ANALYSIS

www.primaryjane.com

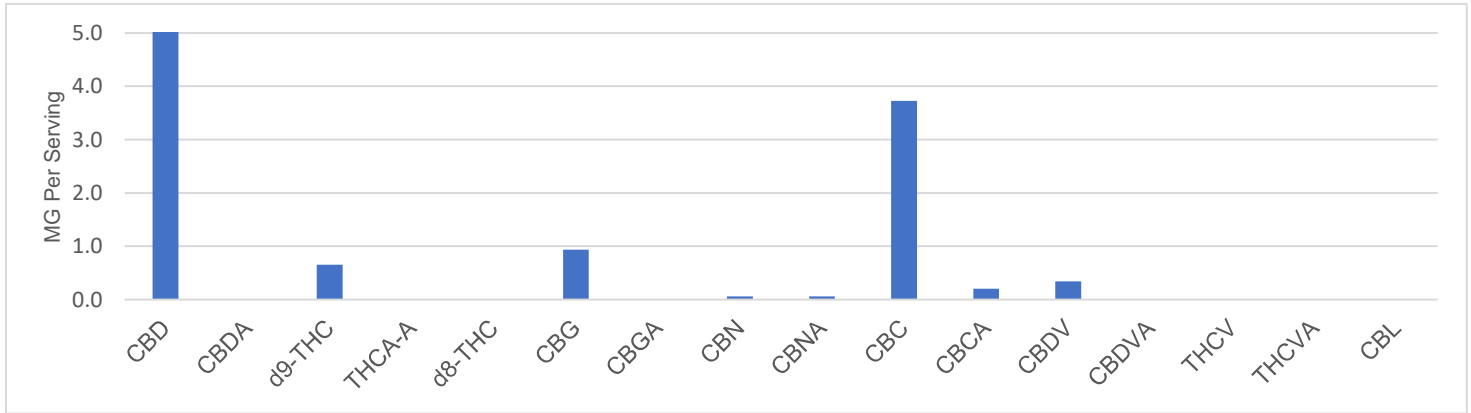


Batch ID: W01SH0519FL1-20B01MA

Parameter: Cannabinoid Potency

DOM: 29-Jan-20

Test Method: C6198 LCMSMS (Internal); LOQ = 0.005%

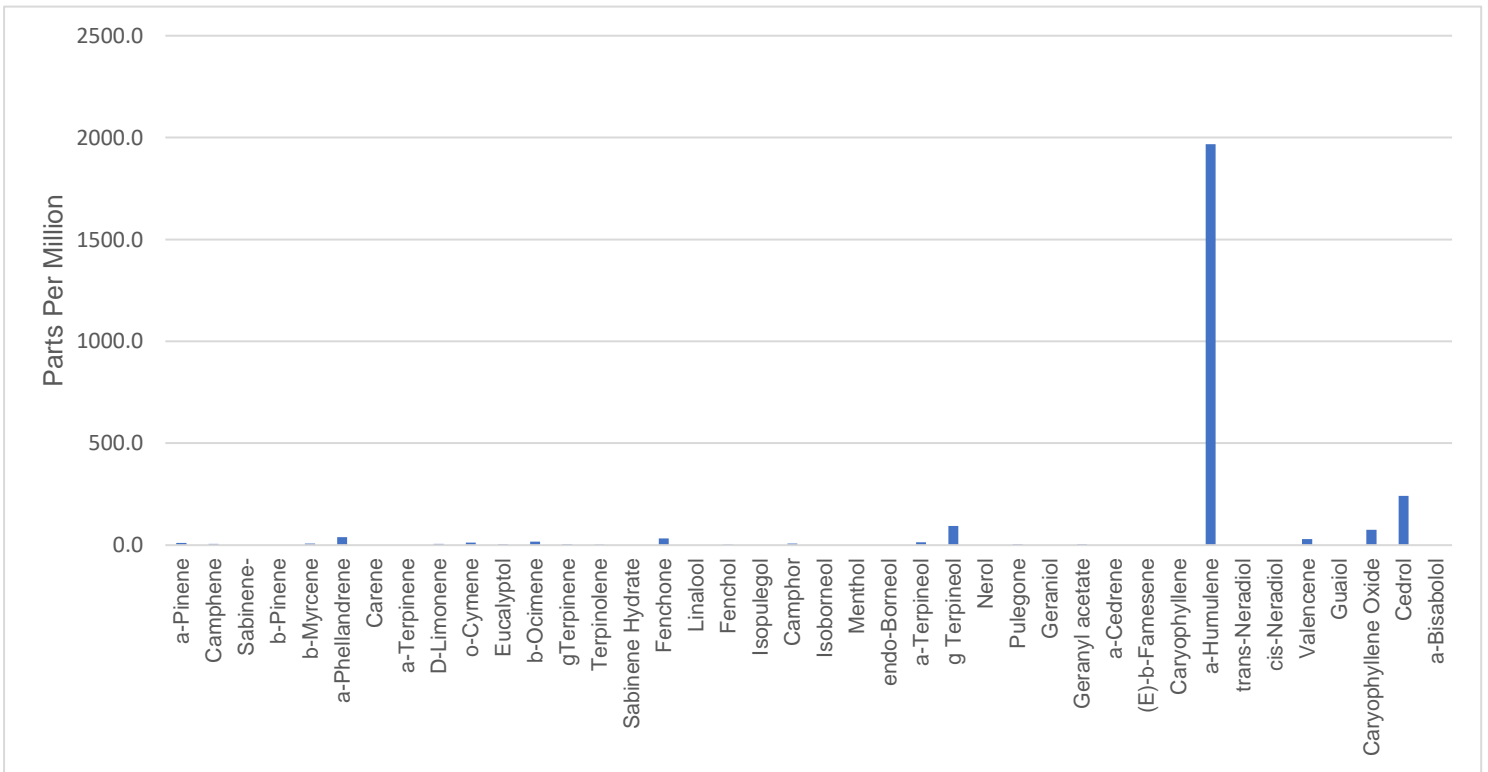


Batch ID: W01SH0519FL1-20B01MA

Parameter: Terpene Profile

DOM: 29-Jan-20

Test Method: C5933 GCMS (Internal); Static Headspace; LOQ = 2 ppm



Approved By:

Representative: Keith Griswold, MS

Title: Chief Scientific Officer

Date: 20-Feb-20



CERTIFICATE OF ANALYSIS

www.primaryjane.com



Batch ID: W01SH0519FL1-20B01MA **Parameter:** Residual Solvents
DOM: 29-Jan-20 **Test Method:** C5923 GCMS (Internal); Static Headspace

Analyte	Units	Reporting Limit	Action Limit	Result	Status
Methanol	%w/w	0.05	0.30	< 0.05	PASS
Pentane	%w/w	0.003	0.50	< 0.003	PASS
Ethanol	%w/w	0.05	0.50	<0.05	PASS
Acetone	%w/w	0.05	0.50	< 0.05	PASS
Isopropanol	%w/w	0.05	0.50	<0.05	PASS
Acetonitrile	%w/w	0.003	0.04	<0.003	PASS
n-Hexane	%w/w	0.003	0.03	<0.003	PASS
Tetrahydrofuran	%w/w	0.003	0.07	<0.003	PASS
Chloroform	%w/w	0.003	0.01	<0.003	PASS
n-Heptane	%w/w	0.02	0.50	<0.02	PASS
Toluene	%w/w	0.003	0.09	<0.003	PASS
m & p Xylene	%w/w	0.003	0.22	<0.003	PASS

*Action limit based on USP 467 requirements for residual solvents Class I, II and III.

Batch ID: W01SH0519FL1-20B01MA **Parameter:** Mycotoxins
DOM: 29-Jan-20 **Test Method:** C5838 LCMSMS/AOAC 2007.01

Analytes	Units	Reporting Limit	Action Limit	Results	Status
Mycotoxins	ppb	n/a	20	< 20	PASS

Batch ID: W01SH0519FL1-20B01MA **Parameter:** Pesticides
DOM: 29-Jan-20 **Test Method:** C5838 LCMSMS/AOAC 2007.01

Analyte	Units	Reporting Limit	Action Limit	Results	Status
Bifenazate	ppm	0.50	0.20	Non Detect	PASS
Etoxale	ppm	0.24	0.20	Nondetect	PASS
Imazalil	ppm	0.04	0.20	Non detect	PASS
Imidacloprid	ppm	0.01	0.40	Non detect	PASS
Myclobutanil	ppm	0.02	0.20	Nondetect	PASS
Spiromesifen	ppm	0.40	0.20	Non detect	PASS
Trifloxystrobin	ppm	0.05	0.20	Non detect	PASS
Bifenthrin	ppm	0.16	0.05	Non detect	PASS
Cyfluthrin	ppm	6.00	0.05	Non detect	PASS

Reporting limit for all mycotoxins screened is 2 parts per billion (ppb); Action level, maximum level allowed by EPA/Orgeon Regulations

Batch ID: W01SH0519FL1-20B01MA **Parameter:** Heavy Metals
DOM: 29-Jan-20 **Test Method:** PMS (External Partner)

Analyte	Units	Reporting Limit	Action Limit	Results*	Status
As	ppb	0.1	200	15	PASS
Hg	ppb	0.1	100	9.1	PASS
Cd	ppb	0.1	200	8.7	PASS
Pb	ppb	0.1	500	64	PASS

*Derived from whole plant concentrate prior to final formulation.

Approved By:

Representative: Keith Griswold, MS

Title: Chief Scientific Officer

Date: 20-Feb-20

